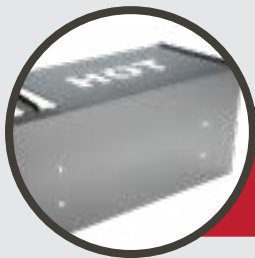




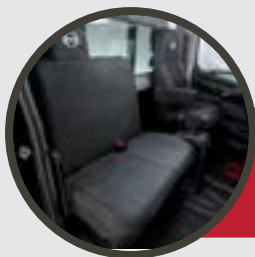
**HINOSTYLE
ACCESSORIES**



EXTERIOR ACCESSORIES - PG 3



WHEEL ACCESSORIES - PG 32



INTERIOR ACCESSORIES - PG 40



HINO GEAR - PG 50

NEW!

The HinoStyle catalog is constantly growing! Look for new additions to the lineup, marked with this red icon.

FIND YOUR FIT, FAST!

A **red icon** in the left column indicates parts listed on that particular page will fit the corresponding model.

Refer to the full description on each page for more detailed fitment/ application information for each part.

**2020+ HINO XL SERIES
(XL7, XL8)**



**2021+ HINO L SERIES
(L6, L7)**



**2005-2020
HINO
CONVENTIONALS**



**2021+
HINO M SERIES
(M4/M5)**



**2012-2020
HINO COE MODELS
(155/ 195/ 195h)**



FITS:



**HINO
XL
SERIES**



**L
SERIES**



CONVENTIONAL



**M
SERIES**



COE

LOCATE A DEALER AT HINO.COM/DEALERS AND PLACE YOUR ORDER



EXTERIOR ACCESSORIES ►



▶ EXTERIOR ACCESSORIES

▶ Bumpers & Accessories	5	▶ License Plate Covers	18
▶ Covers	6	▶ Mirrors	19
▶ Locking DEF Caps	8	▶ Rock Guards	21
▶ Locking Fuel Caps	9	▶ Steps	22
▶ Anti-Siphon	10	▶ Sun Visors	24
▶ Battery Lock	11	▶ Tool Boxes	26
▶ Fog Lamps	12	▶ Chrome Trim	27
▶ Hood Deflector	14	▶ Window Visors	29
▶ Air Deflector	15	▶ Windshields	31
▶ Air/Electric Train Horns	17		

▶ WHEEL ACCESSORIES

▶ INTERIOR/CAB ACCESSORIES

▶ HINO GEAR



▶ Bumpers & Accessories	5	▶ Hood Deflectors	14	▶ Steps	22
▶ Covers	6	▶ Air Deflectors	15	▶ Sun Visors	24
▶ Locking DEF Cap	8	▶ Air/Electric Train Horn	17	▶ Tool Boxes	26
▶ Locking Fuel Caps	9	▶ License Plate Frames	18	▶ Chrome Trim	27
▶ Anti-Siphon	10	▶ Mirrors	19	▶ Window Visors	29
▶ Battery Lock	11	▶ Rock Guards	21	▶ Windshields	31
▶ Fog Lamps	12				

BUMPERS & ACCESSORIES

Give your Hino Truck a dash of class with a variety of accessories, ranging from chrome bumper accessories, stainless steel bumper accents, or LED light bars.

APPLICABLE MODELS

MY 2005-2021 Conventional, MY21+ L Series,
MY 2020+ XL Series, MY 2005-2021 155/195/ M Series COE

MODEL	SPECIFICATIONS	PART #
Conventional Excluding XL Series	Bumper Sub-Assy Front Chrome 145 / 165 / 185	52101E0121
	Bumper Sub-Assy Front Chrome 238 / 258 / 268 / 338	52101E0A83
	Bumper Bar BLANK 238 / 258 / 338	HN001234118
	Bumper Bar BLANK 145 / 165 / 185	HN001234117
	Bumper Bar 10 Oval Lights 238 / 258 / 338	HN001234123
	Bumper Bar 10 Round Lights 238 / 258 / 338	HN001234116
	Bumper Bar Small Round - Amber 238 / 258 / 268 / 338 /	HN001234119
	Bumper Bar Small Mount - LED Clear 238 / 258 / 268 / 338	HN001234120
	License Plate Insert All Conventional Models*	HN001234126
COE	Tow Hook Covers All Models	HN001234121
	License Plate Insert 155 / 195	HN001234122
	Light bars (pair) - 2" round amber LED lights	HN001234204
All Models - Universal Fit		

* Only for trucks **WITHOUT** WABCO OnGuard or other collision avoidance system sensors installed.



LICENSE PLATE INSERT COE

FITS:



▶ Bumpers & Accessories	5	▶ Hood Deflectors	14	▶ Steps	22
▶ Covers	6	▶ Air Deflectors	15	▶ Sun Visors	24
▶ Locking DEF Cap	8	▶ Air/Electric Train Horn	17	▶ Tool Boxes	26
▶ Locking Fuel Caps	9	▶ License Plate Frames	18	▶ Chrome Trim	27
▶ Anti-Siphon	10	▶ Mirrors	19	▶ Window Visors	29
▶ Battery Lock	11	▶ Rock Guards	21	▶ Windshields	31
▶ Fog Lamps	12				

COVERS CONVENTIONAL

Add some additional shine to your Hino conventional truck with these distinctive accessories, made from mirror-finish Stainless Steel.

APPLICABLE MODELS

MY 2011-2020 Conventional Models,
2021+ L Series Models

MODEL	SPECIFICATIONS	PART #
2011-2012 238 / 258 / 268 / 338	DEF Tank Cover 304-X10 Mirror Finish Stainless Steel	HN001234127
2013-2014 238 / 258 / 268 / 338	DEF Tank Cover 304-X10 Mirror Finish Stainless Steel	HN001234128
2011-2013 238 / 258 / 268 / 338	Step Cover Front	HN001234161
2015-2020 238 / 258 / 268 / 338;	DEF Tank Cover 304-X10 Mirror Finish Stainless Steel	HN001234152
2005-2016 238 / 258 / 268 / 338	Battery & Fuel Tank (50 gal) Cover	HN001234160
2005-2010 145 / 165 / 185	Battery & Fuel Tank (50 gal) Cover w/ Door	HN001234135
	Battery & Fuel Tank (50 gal) Stainless Step Cover	HN001234162
2017-2020 258 / 268 / 338	Battery & Fuel Tank (50 gal) Stainless Step Cover w/ Door	HN001234198
	Battery Cover 304-X10 Mirror Finish Stainless Steel	HN001234115



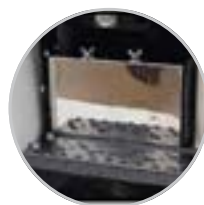
DEF TANK COVER HN001234152



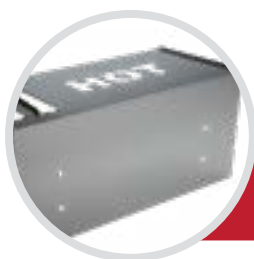
DEF TANK COVER HN001234128



BATTERY & FUEL TANK STAINLESS STEP COVER
HN001234162



BATTERY COVER HN001234115



VIEW COE COVERS ▶

FITS:



▶ Bumpers & Accessories	5	▶ Hood Deflectors	14	▶ Steps	22
▶ Covers	6	▶ Air Deflectors	15	▶ Sun Visors	24
▶ Locking DEF Cap	8	▶ Air/Electric Train Horn	17	▶ Tool Boxes	26
▶ Locking Fuel Caps	9	▶ License Plate Frames	18	▶ Chrome Trim	27
▶ Anti-Siphon	10	▶ Mirrors	19	▶ Window Visors	29
▶ Battery Lock	11	▶ Rock Guards	21	▶ Windshields	31
▶ Fog Lamps	12				

COVERS COE & M SERIES

Add some shine and accentuate your COE or M Series with these covers, or add an extra sense of peace-of-mind with the theft-deterrent diesel particulate (DPF) cover.

APPLICABLE MODELS

MY2012-2020 155/195 COE models,
MY2021+ M Series COE models

SPECIFICATIONS

PART

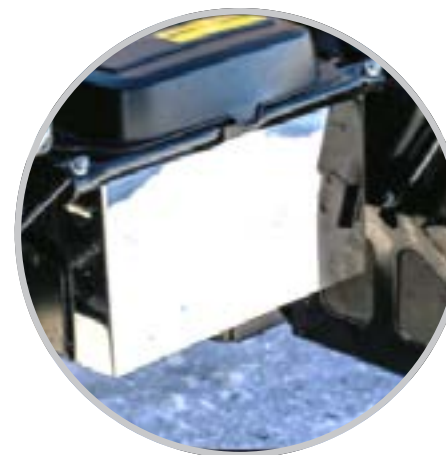
	Diesel Particulate Filter (DPF) Cover	HN001234132
NEW!	Diesel Particulate Filter (DPF) Theft Deterrent Cover	Mirror-Finish Stainless Steel HN001234294
		Galvanized Steel HN001234295
	Starting Battery Cover, Mirror-Finish Stainless Steel	HN001234114



DPF COVER



DPF THEFT DETERRENT COVER



BATTERY COVER



VIEW CONVENTIONAL COVERS ▶

LOCATE A DEALER AT [HINO.COM/DEALERS](https://www.hino.com/dealers) AND PLACE YOUR ORDER

FITS:



HINO
XL
SERIES



L
SERIES



CONVENTIONAL



M
SERIES



COE

▶ Bumpers & Accessories	5	▶ Hood Deflectors	14	▶ Steps	22
▶ Covers	6	▶ Air Deflectors	15	▶ Sun Visors	24
▶ Locking DEF Cap	8	▶ Air/Electric Train Horn	17	▶ Tool Boxes	26
▶ Locking Fuel Caps	9	▶ License Plate Frames	18	▶ Chrome Trim	27
▶ Anti-Siphon	10	▶ Mirrors	19	▶ Window Visors	29
▶ Battery Lock	11	▶ Rock Guards	21	▶ Windshields	31
▶ Fog Lamps	12				

LOCKING DEF CAPS

These locking caps prevent tampering and contamination of diesel exhaust fluid (DEF) on your Hino truck.

APPLICABLE MODELS

MY 2010+ Conventional, COE, M Series, L Series, XL Series Models

SPECIFICATIONS	PART #
Mixed Key	HN001234217
Keyed Alike	HN001234039



FITS:



▶ Bumpers & Accessories	5	▶ Hood Deflectors	14	▶ Steps	22
▶ Covers	6	▶ Air Deflectors	15	▶ Sun Visors	24
▶ Locking DEF Cap	8	▶ Air/Electric Train Horn	17	▶ Tool Boxes	26
▶ Locking Fuel Caps	9	▶ License Plate Frames	18	▶ Chrome Trim	27
▶ Anti-Siphon	10	▶ Mirrors	19	▶ Window Visors	29
▶ Battery Lock	11	▶ Rock Guards	21	▶ Windshields	31
▶ Fog Lamps	12				

LOCKING FUEL CAPS

Keep your truck's fuel safe from tampering or theft. Available for steel and aluminum Hino fuel tanks. Each locking fuel cap includes locking mechanism and two keys.

APPLICABLE MODELS

MY 2005-2021 Conventional, 2021+ L Series, 2020+ XL Series, 2012-2020 155/195 COE, 2021+ M Series models

CAP TYPE	SPECIFICATIONS	PART #
Brass, for Steel Side-Mounted Tanks on COE, M Series, Conventional, and L Series models	Locking Fuel Cap, Brass	
	NOTE: NOT for use on COE/ M Series models with in-frame tanks.	77310H3600
Conventional, L Series, XL Series with Aluminum Tankcraft fuel tanks	Mixed Keyed	
		HN001234049
	Keyed Alike	Key Code 320
		HN001234049-320
		Key Code 321
		HN001234049-321
	Keyed Alike	Key Code 322
		HN001234049-322
	Keyed Alike	Key Code 323
		HN001234049-323
	Keyed Alike	Key Code 324
		HN001234049-324

FOR ALUMINUM TANKCRAFT COE

BRASS FOR STEEL TANK

FOR ALUMINUM TANKCRAFT NAPS

VIEW ANTI-SIPHON ▶

FITS:



► Bumpers & Accessories	5	► Hood Deflectors	14	► Steps	22
► Covers	6	► Air Deflectors	15	► Sun Visors	24
► Locking DEF Cap	8	► Air/Electric Train Horn	17	► Tool Boxes	26
► Locking Fuel Caps	9	► License Plate Frames	18	► Chrome Trim	27
► Anti-Siphon	10	► Mirrors	19	► Window Visors	29
► Battery Lock	11	► Rock Guards	21	► Windshields	31
► Fog Lamps	12				

ANTI-SIPHON

This aluminum anti-siphon provides additional protection for your fuel tank. Pair this device with locking fuel caps for maximum effect.

APPLICABLE MODELS

All Hino Trucks with a 2" fuel filler

SPECIFICATIONS

Anti-Siphon; Aluminum

PART

HN001234184



[VIEW LOCKING FUEL CAPS ►](#)

LOCATE A DEALER AT [HINO.COM/DEALERS](https://www.hino.com/dealers) AND PLACE YOUR ORDER

FITS:



► Bumpers & Accessories	5	► Hood Deflectors	14	► Steps	22
► Covers	6	► Air Deflectors	15	► Sun Visors	24
► Locking DEF Cap	8	► Air/Electric Train Horn	17	► Tool Boxes	26
► Locking Fuel Caps	9	► License Plate Frames	18	► Chrome Trim	27
► Anti-Siphon	10	► Mirrors	19	► Window Visors	29
► Battery Lock	11	► Rock Guards	21	► Windshields	31
► Fog Lamps	12				

COE BATTERY LOCK

Secure the starting battery on your 155, 195, M4, or M5 COE model with this sturdy steel theft deterrent device.

APPLICABLE MODELS

MY2012-2020 155/195 COE models,
MY2021+ M Series COE models

SPECIFICATIONS

PART



COE Battery Lock

HN001234219



FITS:



HINO
XL
SERIES



L
SERIES



CONVENTIONAL



M
SERIES



COE

► Bumpers & Accessories	5	► Hood Deflectors	14	► Steps	22
► Covers	6	► Air Deflectors	15	► Sun Visors	24
► Locking DEF Cap	8	► Air/Electric Train Horn	17	► Tool Boxes	26
► Locking Fuel Caps	9	► License Plate Frames	18	► Chrome Trim	27
► Anti-Siphon	10	► Mirrors	19	► Window Visors	29
► Battery Lock	11	► Rock Guards	21	► Windshields	31
► Fog Lamps	12				

FOG LAMPS

Increase driver visibility with this set of easy-to-install fog lamps. Kit includes right and left-hand lamps, mounting hardware and switch. Switch does **not** shut off fog lamps when high beams are turned on. Check FMVSS regulations. Install switch as necessary.

APPLICABLE MODELS

MY2018-2020

155/ 195 COE Models

TYPE	SPECIFICATIONS	PART #
Full fog lamp kit	Includes all parts below	HN001234056
Fog Lamps	RH/ 1 Pc/ Add?	812100W050
	LH/ 1 Pc/ Add	812200W040
Mount Bracket	RH/ 1 Pc/ Add	5212537020
	LH/ 1 Pc/ Add	5212637020
Hole Cover	BOLT / 6 Pcs/ Add	9011906779
	RH/ 1 Pc/ Add	8161037180
	LH/ 1 Pc/ Add	8162037180
Harness	BOLT/ 1 Pc/ Add	9016750063
	1 Pc/ Add	8211437300
Dimmer Lamp Switch	1 Pc/ Replace	8414037171

NOTE: Fits 5211137400A0 and 5211137390A0 Bumpers



VIEW ON TRUCK ►

LOCATE A DEALER AT HINO.COM/DEALERS AND PLACE YOUR ORDER

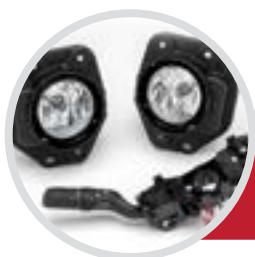
FITS:



► Bumpers & Accessories	5	► Hood Deflectors	14	► Steps	22
► Covers	6	► Air Deflectors	15	► Sun Visors	24
► Locking DEF Cap	8	► Air/Electric Train Horn	17	► Tool Boxes	26
► Locking Fuel Caps	9	► License Plate Frames	18	► Chrome Trim	27
► Anti-Siphon	10	► Mirrors	19	► Window Visors	29
► Battery Lock	11	► Rock Guards	21	► Windshields	31
► Fog Lamps	12				

FOG LAMPS

Increase driver visibility with this set of easy-to-install fog lamps. Kit includes right and left-hand lamps, mounting hardware and switch. Switch does **not** shut off fog lamps when high beams are turned on. Check FMVSS regulations. Install switch as necessary.



[VIEW PART DETAILS ►](#)

LOCATE A DEALER AT HINO.COM/DEALERS AND PLACE YOUR ORDER

FITS:



▶ Bumpers & Accessories	5	▶ Hood Deflectors	14	▶ Steps	22
▶ Covers	6	▶ Air Deflectors	15	▶ Sun Visors	24
▶ Locking DEF Cap	8	▶ Air/Electric Train Horn	17	▶ Tool Boxes	26
▶ Locking Fuel Caps	9	▶ License Plate Frames	18	▶ Chrome Trim	27
▶ Anti-Siphon	10	▶ Mirrors	19	▶ Window Visors	29
▶ Battery Lock	11	▶ Rock Guards	21	▶ Windshields	31
▶ Fog Lamps	12				

HOOD DEFLECTOR

Help deflect bugs and road debris away from your windshield with this mirror-finish stainless steel hood deflector.

APPLICABLE MODELS

MY2005-2020 Conventional Models,
2020+ XL Series Models

MODEL

2005-2010
145 / 165 / 185 Models

2011-2020
258 / 268 / 338 Models

2020+
XL Series Models (XL7, XL8)

PART

HN001234141

HN001234129

HN001234270

NEW!

HOOD DEFLECTOR



XL SERIES HOOD DEFLECTOR

LOCATE A DEALER AT [HINO.COM/DEALERS](https://www.hino.com/dealers) AND PLACE YOUR ORDER

FITS:



► Bumpers & Accessories	5	► Hood Deflectors	14	► Steps	22
► Covers	6	► Air Deflectors	15	► Sun Visors	24
► Locking DEF Cap	8	► Air/Electric Train Horn	17	► Tool Boxes	26
► Locking Fuel Caps	9	► License Plate Frames	18	► Chrome Trim	27
► Anti-Siphon	10	► Mirrors	19	► Window Visors	29
► Battery Lock	11	► Rock Guards	21	► Windshields	31
► Fog Lamps	12				

AIR DEFLECTOR CONVENTIONALS

Hino has worked hard to develop an air deflector kit that looks great and cuts your operating costs by reducing fuel consumption. Installation is fast and easy and can be mounted without the use of a hoist or crane.

APPLICABLE MODELS

2016-2020 Conventionals, 2021+ L Series,
2020+ XL Series

SPECIFICATIONS	PART #
White Air Deflector Full Install Kit	G-MAD-H-AS-01
Black Air Deflector Full Install Kit	G-MAD-H-AS-01-05
Red Air Deflector Full Install Kit	G-MAD-H-AS-01-07



[VIEW MORE AIR DEFLECTORS ►](#)

LOCATE A DEALER AT [HINO.COM/DEALERS](https://www.hino.com/dealers) AND PLACE YOUR ORDER

FITS:



▶ Bumpers & Accessories	5	▶ Hood Deflectors	14	▶ Steps	22
▶ Covers	6	▶ Air Deflectors	15	▶ Sun Visors	24
▶ Locking DEF Cap	8	▶ Air/Electric Train Horn	17	▶ Tool Boxes	26
▶ Locking Fuel Caps	9	▶ License Plate Frames	18	▶ Chrome Trim	27
▶ Anti-Siphon	10	▶ Mirrors	19	▶ Window Visors	29
▶ Battery Lock	11	▶ Rock Guards	21	▶ Windshields	31
▶ Fog Lamps	12				

AIR DEFLECTOR COE & CONVENTIONALS

Stylize your truck and improve its aerodynamics with the Hino Air Deflector Kit. Hino worked hard to develop a product that looks great and improves efficiency. Installation is fast, easy, and deflectors can be mounted without using a hoist or crane.

APPLICABLE MODELS

MY 2005-2020 Conventional Models,
2012-2020 155/195 COE , 2021+ M Series Models

MODEL	SPECIFICATIONS	PART #
2013-2017 155/195 COE Models	Off-White	HMSF100
2018-2020 155/195, 2021+ M Series	Bright White	HMSF101
2005-2015 Conventional Models	Off-White	HMSF200
2016-2020 Conventional Models	Bright White	HMSF201

NOTE: Not compatible with any Hino with a vertical exhaust.

AIR DEFLECTOR



CONVENTIONAL AIR DEFLECTOR



[VIEW OTHER CONV. AIR DEFLECTORS ▶](#)

LOCATE A DEALER AT [HINO.COM/DEALERS](https://www.hino.com/dealers) AND PLACE YOUR ORDER

FITS:



► Bumpers & Accessories	5	► Hood Deflectors	14	► Steps	22
► Covers	6	► Air Deflectors	15	► Sun Visors	24
► Locking DEF Cap	8	► Air/Electric Train Horn	17	► Tool Boxes	26
► Locking Fuel Caps	9	► License Plate Frames	18	► Chrome Trim	27
► Anti-Siphon	10	► Mirrors	19	► Window Visors	29
► Battery Lock	11	► Rock Guards	21	► Windshields	31
► Fog Lamps	12				

AIR/ ELECTRIC TRAIN HORNS

Let them know you mean business with a three or four bell air/ electric train horn. Horns can be installed on any Hino truck **equipped with engine-mounted air compressors**, and require a minimum of 120 PSI to be operational.

APPLICABLE MODELS

2008-2020 Conventional, 2021+ L Series, 2020+ XL Series models
Equipped with Engine-Mounted Air Compressor

SPECIFICATIONS	PART #
Air/Electric Train Horn 3 Bells / 130 Decibels / Full Kit	HN001234110
Air/Electric Train Horn 4 Bells / 145 Decibels / Full Kit	HN001234111
Replacement Solenoid for either kit	HN001234159



FITS:



▶ Bumpers & Accessories	5	▶ Hood Deflectors	14	▶ Steps	22
▶ Covers	6	▶ Air Deflectors	15	▶ Sun Visors	24
▶ Locking DEF Cap	8	▶ Air/Electric Train Horn	17	▶ Tool Boxes	26
▶ Locking Fuel Caps	9	▶ License Plate Frames	18	▶ Chrome Trim	27
▶ Anti-Siphon	10	▶ Mirrors	19	▶ Window Visors	29
▶ Battery Lock	11	▶ Rock Guards	21	▶ Windshields	31
▶ Fog Lamps	12				

LICENSE PLATE FRAMES

Show your Hino pride with these license plate covers available in PURE HINO and HINO USA styles. Reflective backing is now included with all covers.

Note: not intended for front fitment on trucks equipped with WABCO OnGuard or other forward collision detection system sensors.

APPLICABLE MODELS

All Hino Trucks - Universal Fit



FINISH	DESIGN	PART #
Mirror Finish	HINO USA Hino Logo with Edge Bending	HN001234085
	PURE HINO Flat Plate with Hino Logo	HN001234147
	PURE HINO Hino Logo with Edge Bending	HN001234149
	HINO USA Hino Logo with Edge Bending	HN001234086
Brushed Finish	PURE HINO Flat Plate with Hino Logo	HN001234146
	PURE HINO Hino Logo with Edge Bending	HN001234148

FITS:



LOCATE A DEALER AT [HINO.COM/DEALERS](https://www.hino.com/dealers) AND PLACE YOUR ORDER

▶ Bumpers & Accessories	5	▶ Hood Deflectors	14	▶ Steps	22
▶ Covers	6	▶ Air Deflectors	15	▶ Sun Visors	24
▶ Locking DEF Cap	8	▶ Air/Electric Train Horn	17	▶ Tool Boxes	26
▶ Locking Fuel Caps	9	▶ License Plate Frames	18	▶ Chrome Trim	27
▶ Anti-Siphon	10	▶ Mirrors	19	▶ Window Visors	29
▶ Battery Lock	11	▶ Rock Guards	21	▶ Windshields	31
▶ Fog Lamps	12				

MIRRORS

These mirrors come dressed in black or chrome caps, and are available with both remote power adjustment and heated glass for an ice-free view.

APPLICABLE MODELS

MY2005-2020 Conventional, 2021+ L Series,
2020+ XL Series Models

MODEL	SPECIFICATIONS	PART #
2008-2021 Trucks, Adding Remote Power	Currently have black/ heated mirrors? Includes full mirror assembly with black covers	HN001234005
	Currently have black/ heated or chrome/ heated mirrors? Includes full mirror assembly with chrome back covers	HN001234006
2008-2021 Trucks, Adding Heated Glass & Chrome Caps	Kit A - converts black caps to chrome, and unheated glass to heated	87902KIT08C
	Kit B - converts unheated mirrors with black caps to heated mirrors with black caps	87902KIT08B
	Kit C - converts black caps to chrome caps, if mirror is already heated. In- cludes both large and small caps.	87902KITCC
2005-2007 Trucks	To convert to black heated mirrors with marker lamp on back	87902KIT05



VIEW ON TRUCK ▶

LOCATE A DEALER AT [HINO.COM/DEALERS](https://www.hino.com/dealers) AND PLACE YOUR ORDER

FITS:



► Bumpers & Accessories	5	► Hood Deflectors	14	► Steps	22
► Covers	6	► Air Deflectors	15	► Sun Visors	24
► Locking DEF Cap	8	► Air/Electric Train Horn	17	► Tool Boxes	26
► Locking Fuel Caps	9	► License Plate Frames	18	► Chrome Trim	27
► Anti-Siphon	10	► Mirrors	19	► Window Visors	29
► Battery Lock	11	► Rock Guards	21	► Windshields	31
► Fog Lamps	12				

MIRRORS

These mirrors come dressed in black or chrome caps, and are available with both remote power adjustment and heated glass for an ice-free view.



[VIEW PART DETAILS ►](#)

FITS:



20



LOCATE A DEALER AT HINO.COM/DEALERS AND PLACE YOUR ORDER

▶ Bumpers & Accessories	5	▶ Hood Deflectors	14	▶ Steps	22
▶ Covers	6	▶ Air Deflectors	15	▶ Sun Visors	24
▶ Locking DEF Cap	8	▶ Air/Electric Train Horn	17	▶ Tool Boxes	26
▶ Locking Fuel Caps	9	▶ License Plate Frames	18	▶ Chrome Trim	27
▶ Anti-Siphon	10	▶ Mirrors	19	▶ Window Visors	29
▶ Battery Lock	11	▶ Rock Guards	21	▶ Windshields	31
▶ Fog Lamps	12				

ROCK GUARDS

Protects the condenser, radiator and charge air cooler from bugs, rocks and road debris. Made of heavy-duty black aluminum mesh and installs easily.

APPLICABLE MODELS

MY 2005-2020

238/ 258/ 268/ 338 Models

MODEL

2005-2010 Trucks

2011-2020 Trucks

PART

HN001234105

HN001234106



- ✓ PROTECTS CONDENSER, RADIATOR AND CHARGE AIR COOLER FROM BUGS, ROCKS AND ROAD DEBRIS
- ✓ HEAVY-DUTY BLACK ALUMINUM MESH
- ✓ INSTALLS USING EXISTING BOLTS AND HOLES

FITS:



► Bumpers & Accessories	5	► Hood Deflectors	14	► Steps	22
► Covers	6	► Air Deflectors	15	► Sun Visors	24
► Locking DEF Cap	8	► Air/Electric Train Horn	17	► Tool Boxes	26
► Locking Fuel Caps	9	► License Plate Frames	18	► Chrome Trim	27
► Anti-Siphon	10	► Mirrors	19	► Window Visors	29
► Battery Lock	11	► Rock Guards	21	► Windshields	31
► Fog Lamps	12				

STEPS & TANK COVERS

These stainless steel steps provide both a mirror finish for a great appearance, and a textured surface for grip when climbing in and out of the cab.

APPLICABLE MODELS

MY 2014-2020 238/ 258/ 268/ 338 Conventional Models,
MY 21+ L Series Models

MODEL	SPECIFICATIONS	PART #
2011-2013 238 / 258 / 268 / 338	Driver Upper Step	HN001234154
	Driver Lower Step	HN001234199
	Passenger Upper Step	HN001234158
	Passenger Lower Step	HN001234157
	Step Cover Front	HN001234161
2014-2020 238 / 258 / 268 / 338, 2021+ L Series (reg cab only)	Driver Upper and Lower Steps, Passenger Upper Step (sold individually)	HN001234156
	Passenger Lower Step	HN001234155
2017-2020 258/268/338	Battery & Fuel Tank Cover, Mirror Finish Stainless Steel	HN001234162
	Battery & Fuel Tank Cover w/ Access Door Mirror Finish Stainless Steel	HN001234198



CHECK OUT OUR NEW TRACTION STEPS
ON THE NEXT PAGE! ►

LOCATE A DEALER AT HINO.COM/DEALERS AND PLACE YOUR ORDER

FITS:



▶ Bumpers & Accessories	5	▶ Hood Deflectors	14	▶ Steps	22
▶ Covers	6	▶ Air Deflectors	15	▶ Sun Visors	24
▶ Locking DEF Cap	8	▶ Air/Electric Train Horn	17	▶ Tool Boxes	26
▶ Locking Fuel Caps	9	▶ License Plate Frames	18	▶ Chrome Trim	27
▶ Anti-Siphon	10	▶ Mirrors	19	▶ Window Visors	29
▶ Battery Lock	11	▶ Rock Guards	21	▶ Windshields	31
▶ Fog Lamps	12				

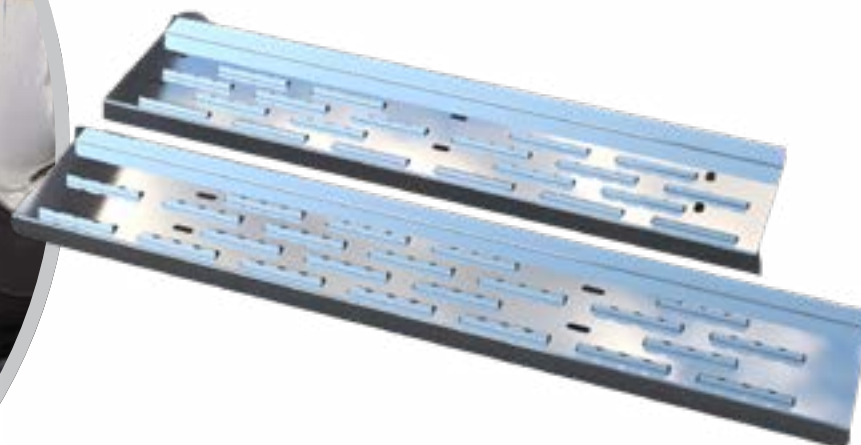
STEPS TRACTION STEPS **NEW!**

These stainless steel steps incorporate a prominent cleat-style tread to provide sure-footed traction upon entry or egress, while 4-inch wide openings help clear mud, snow, slush, and other debris.

APPLICABLE MODELS

MY 2014-2020 238/ 258/ 268/ 338 Conventional Models,
MY 21+ L Series Models

MODEL	SPECIFICATIONS	PART #
NEW! 2014-2020 238 / 258 / 268 / 338, 2021 L Series models - conventional cab only	Driver Upper and Lower Steps, Passenger Upper Step (sold individually)	HN001234156
	Passenger Lower Step (sold individually)	HN001234155


FITS:


▶ Bumpers & Accessories	5	▶ Hood Deflectors	14	▶ Steps	22
▶ Covers	6	▶ Air Deflectors	15	▶ Sun Visors	24
▶ Locking DEF Cap	8	▶ Air/Electric Train Horn	17	▶ Tool Boxes	26
▶ Locking Fuel Caps	9	▶ License Plate Frames	18	▶ Chrome Trim	27
▶ Anti-Siphon	10	▶ Mirrors	19	▶ Window Visors	29
▶ Battery Lock	11	▶ Rock Guards	21	▶ Windshields	31
▶ Fog Lamps	12				

SUN VISORS CONVENTIONAL

Our sun visors include 5 stealth LED lights, and is made from 304-grade mirror-finish stainless steel.

APPLICABLE MODELS

MY 2005-2020 Conventional, 2021+ L Series Models,
2020+ XL Series Models

SPECIFICATIONS	PART #
LED Sun Visor **ONLY FOR TRUCKS WITHOUT WABCO OR OTHER LANE DEPARTURE SYSTEMS** 304-X10 Mirror Finish Stainless Steel	HN001234163
NEW! LED Stainless Steel Sun Visor by Metchro For Trucks WITH Wabco OnLane Lane Departure System 304-X10 Mirror Finish Stainless Steel	MC-S7H31006LED

LED SUN VISOR



[VIEW COE SUN VISORS ▶](#)

LOCATE A DEALER AT [HINO.COM/DEALERS](https://www.hino.com/dealers) AND PLACE YOUR ORDER

FITS:



▶ Bumpers & Accessories	5	▶ Hood Deflectors	14	▶ Steps	22
▶ Covers	6	▶ Air Deflectors	15	▶ Sun Visors	24
▶ Locking DEF Cap	8	▶ Air/Electric Train Horn	17	▶ Tool Boxes	26
▶ Locking Fuel Caps	9	▶ License Plate Frames	18	▶ Chrome Trim	27
▶ Anti-Siphon	10	▶ Mirrors	19	▶ Window Visors	29
▶ Battery Lock	11	▶ Rock Guards	21	▶ Windshields	31
▶ Fog Lamps	12				

SUN VISORS COE & M SERIES

Our sun visor is composed of 304-grade, mirror-finish stainless steel.

NOTE: A sun visor may **not** be installed if a windshield lane departure camera system is currently on or going to be installed on the truck.

APPLICABLE MODELS

MY 2005-2020 155/ 195 COE,
2021+ M Series Models (M4, M5)

SPECIFICATIONS

Sun Visor - 304-X10 Mirror Finish Stainless Steel
****ONLY FOR TRUCKS WITHOUT WABCO OR OTHER
LANE DEPARTURE SYSTEMS****

PART

HN001234164



VIEW CONVENTIONAL SUN VISORS >

LOCATE A DEALER AT [HINO.COM/DEALERS](https://www.hino.com/dealers) AND PLACE YOUR ORDER

FITS:



▶ Bumpers & Accessories	5	▶ Hood Deflectors	14	▶ Steps	22
▶ Covers	6	▶ Air Deflectors	15	▶ Sun Visors	24
▶ Locking DEF Cap	8	▶ Air/Electric Train Horn	17	▶ Tool Boxes	26
▶ Locking Fuel Caps	9	▶ License Plate Frames	18	▶ Chrome Trim	27
▶ Anti-Siphon	10	▶ Mirrors	19	▶ Window Visors	29
▶ Battery Lock	11	▶ Rock Guards	21	▶ Windshields	31
▶ Fog Lamps	12				

TOOL BOXES

Secure, convenient, attractive, and durable. Black powder coated steel tool box with a polished stainless steel door. Available in sizes to meet your storage needs.

APPLICABLE MODELS

MY 2005-2020 Conventional Models,
2021+ L Series, 2020+ XL Series

SPECIFICATIONS

SPECIFICATIONS	PART #
24" Tool Box	HN001234168
30" Tool Box	HN001234169
36" Tool Box	HN001234170
48" Tool Box	HN001234171
60" Tool Box	HN001234172

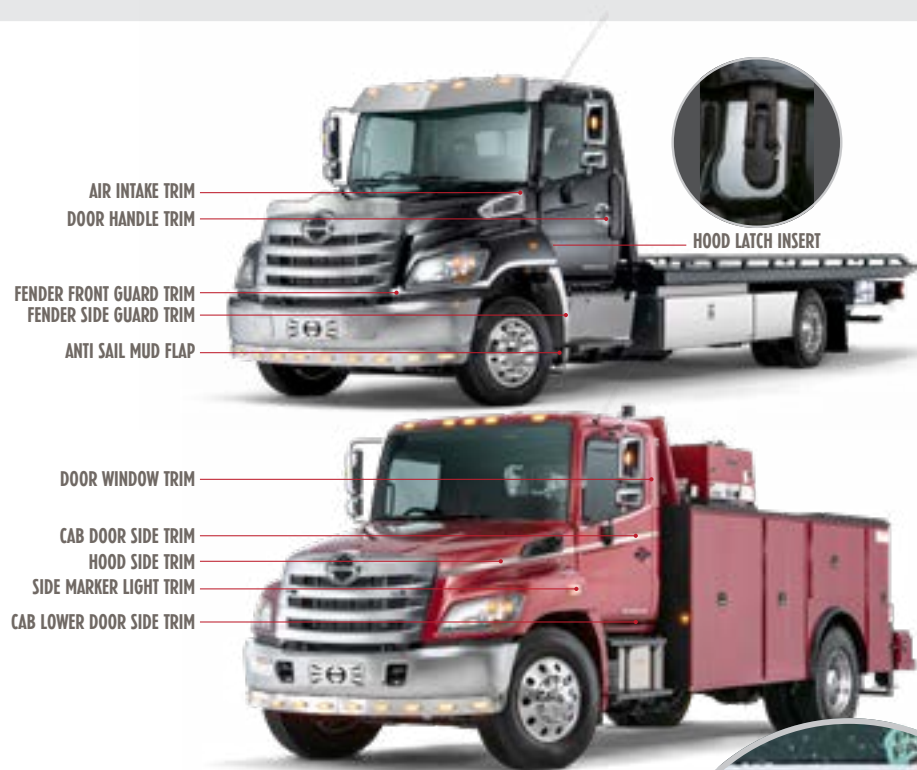


TOOL BOX

FITS:



► Bumpers & Accessories	5	► Hood Deflectors	14	► Steps	22
► Covers	6	► Air Deflectors	15	► Sun Visors	24
► Locking DEF Cap	8	► Air/Electric Train Horn	17	► Tool Boxes	26
► Locking Fuel Caps	9	► License Plate Frames	18	► Chrome Trim	27
► Anti-Siphon	10	► Mirrors	19	► Window Visors	29
► Battery Lock	11	► Rock Guards	21	► Windshields	31
► Fog Lamps	12				



VIEW COE CHROME TRIM ►



CHROME TRIM CONVENTIONAL

All adhesive trim products are a double-sided, heavy-duty 3M adhesive tape to create an ultra-strong bond with painted surfaces. Simple installation instructions are included.

APPLICABLE MODELS

MY 2005-2010 Conventional, 2021+ L Series,
2020+ XL Series

MODEL	SPECIFICATIONS	PART #
2005-2010 145 / 165 / 185	Fender Guard Trim - Front	HN001234134
	Fender Guard Trim - Side	HN001234137
	Hood Latch Insert - Stainless Steel	HN001234144
	Short Anti Sail Mud Flap 145 / 165 / 185	HN001234133
2005-2010 258 / 268 / 338	Hood Latch Insert - Stainless Steel	HN001234143
2005-2020 All Conventional, Excluding L, XL Series	Air intake trim	HN001234112
	Cab-Lower Door Trim Kit	HN001234150
	Cab Door Side Trim Kit	HN001234125
	Door Window Trim Kit	HN001234131
2005-2020 All Conventional, 2021+ L Series, and 2020+ XL Series	Door Handle Trim Kit	HN001234130
	Side Marker Light	HN001234151
	"Hino USA" Anti-Sail Mud Flap	HN001234212
	"Hino USA" Mud Flap Weight	HN001234213
	Stainless Steel Air Intake	HN001234143
	Hood Latch Insert	HN001234144
2020+ XL Series (XL7, XL8)		



LOCATE A DEALER AT [HINO.COM/DEALERS](https://www.hino.com/dealers) AND PLACE YOUR ORDER

FITS:

HINO
XL
SERIESL
SERIES

CONVENTIONAL

M
SERIES

COE



► Bumpers & Accessories	5	► Hood Deflectors	14	► Steps	22
► Covers	6	► Air Deflectors	15	► Sun Visors	24
► Locking DEF Cap	8	► Air/Electric Train Horn	17	► Tool Boxes	26
► Locking Fuel Caps	9	► License Plate Frames	18	► Chrome Trim	27
► Anti-Siphon	10	► Mirrors	19	► Window Visors	29
► Battery Lock	11	► Rock Guards	21	► Windshields	31
► Fog Lamps	12				

CHROME TRIM COE/ M SERIES

These beautiful mirror-finish stainless steel accents provide a distinctive look, and adhere quickly, easily, and securely to painted surfaces.

APPLICABLE MODELS

MY 2005-2020 155/ 195 COE,
2021+ M Series Models (M4, M5)

MODEL	SPECIFICATIONS	PART #
2012-2020 155/ 195 COE Models	Front Cab Panel Trim (3 parts)	HN001234124
	Side Door Handle trim	HN001234153
2012-2020 155/195, 2021+ M Series Models	"Hino USA" Anti-Sail Mudflap	HN001234212
	"Hino USA" Mudflap Weight	HN001234213

FRONT CAB
PANEL TRIM



SIDE DOOR
HANDLE TRIM



[VIEW CONVENTIONAL CHROME TRIM ►](#)

LOCATE A DEALER AT [HINO.COM/DEALERS](https://www.hino.com/dealers) AND PLACE YOUR ORDER

FITS:



▶ Bumpers & Accessories	5	▶ Hood Deflectors	14	▶ Steps	22
▶ Covers	6	▶ Air Deflectors	15	▶ Sun Visors	24
▶ Locking DEF Cap	8	▶ Air/Electric Train Horn	17	▶ Tool Boxes	26
▶ Locking Fuel Caps	9	▶ License Plate Frames	18	▶ Chrome Trim	27
▶ Anti-Siphon	10	▶ Mirrors	19	▶ Window Visors	29
▶ Battery Lock	11	▶ Rock Guards	21	▶ Windshields	31
▶ Fog Lamps	12				

WINDOW VISORS CONVENTIONAL

Let fresh air into your Hino's cab while keeping rain and other inclement elements out with these smoked acrylic or stainless steel window visors. Sold in pairs.

APPLICABLE MODELS

MY 2005-2020 Conventional, 2021+ L Series,
2020+ XL Series Models

SPECIFICATIONS

Smoked Acrylic Window Visor

PART

HN001234107



[VIEW COE WINDOW VISORS >](#)

LOCATE A DEALER AT [HINO.COM/DEALERS](https://www.hino.com/dealers) AND PLACE YOUR ORDER

FITS:



▶ Bumpers & Accessories	5	▶ Hood Deflectors	14	▶ Steps	22
▶ Covers	6	▶ Air Deflectors	15	▶ Sun Visors	24
▶ Locking DEF Cap	8	▶ Air/Electric Train Horn	17	▶ Tool Boxes	26
▶ Locking Fuel Caps	9	▶ License Plate Frames	18	▶ Chrome Trim	27
▶ Anti-Siphon	10	▶ Mirrors	19	▶ Window Visors	29
▶ Battery Lock	11	▶ Rock Guards	21	▶ Windshields	31
▶ Fog Lamps	12				

WINDOW VISORS COE

Let fresh air into your Hino's cab while keeping rain and other inclement elements out with these stainless steel window visors. Sold in pairs.

APPLICABLE MODELS

MY 2012-2020 155/195 COE Models,
2021+ M Series Models

SPECIFICATIONS	PART #
Stainless Steel Window Deflector (Partial)	HN001234165
Stainless Steel Window Deflector (Full)	HN001234139



PARTIAL



FULL



[VIEW CONVENTIONAL WINDOW VISORS ▶](#)

LOCATE A DEALER AT [HINO.COM/DEALERS](https://www.hino.com/dealers) AND PLACE YOUR ORDER

FITS:



► Bumpers & Accessories	5	► Hood Deflectors	14	► Steps	22
► Covers	6	► Air Deflectors	15	► Sun Visors	24
► Locking DEF Cap	8	► Air/Electric Train Horn	17	► Tool Boxes	26
► Locking Fuel Caps	9	► License Plate Frames	18	► Chrome Trim	27
► Anti-Siphon	10	► Mirrors	19	► Window Visors	29
► Battery Lock	11	► Rock Guards	21	► Windshields	31
► Fog Lamps	12				

WINDSHIELDS

Replacement windshields for conventional and COE Hino trucks.

APPLICABLE MODELS

MY 2005-2020 Conventional, 2021+ L Series,
2020+ XL Series,
2012-2020 155/195 COE, 2021+ M Series Models

MODEL	SPECIFICATIONS	PART #
2005-2020 Conventional, 2021+ L Series, 2020+ XL Series	All Conventional, L Series, and XL Series Trucks **WITHOUT** WABCO OnLane™ Lane Departure Warning system	56111E0150
	All Conventional/ L Series and XL Series Trucks **WITH** WABCO OnLane™ Lane Departure Warning system	56111EW090
2012-2020 155/195, 2021+ M Series	All trucks **WITHOUT** WABCO OnLane™ Lane Departure Warning system	HN001234054

IMPORTANT SAFETY NOTES REGARDING WINDSHIELD REPLACEMENT

- Aftermarket windshields and surrounding moldings/ gaskets are very frequently **NOT** manufactured to the stringent quality standards set by Hino Motors Sales, Inc. (HMS)
- Despite the claims of some aftermarket glass manufacturers, **NO** aftermarket glass company has access to Hino's exacting specifications and tooling, nor do they validate their product to Hino's exacting standards.
- As a result, aftermarket windshield frequently use inferior materials, which can negatively and drastically impact installed safety systems that rely upon forward-facing cameras.
- Hino Trucks equipped with these systems **should only have windshields replaced with the proper OEM windshield**. Additionally, forward-facing **cameras must always be recalibrated following any windshield installation**. Refer to HMS service department & FMVSS for more information, and **use extreme caution** when replacing windshields.
- Sun visors may **NOT** be installed on any Hino Truck equipped with a windshield-mounted camera &/or lane departure system.

LOCATE A DEALER AT [HINO.COM/DEALERS](https://www.hino.com/dealers) AND PLACE YOUR ORDER

FITS:



HINO XL SERIES



L SERIES



CONVENTIONAL



M SERIES



COE





WHEEL ACCESSORIES ►

▶ EXTERIOR ACCESSORIES

▶ WHEEL ACCESSORIES

NEW! ▶ HinoStyle Center Caps	34
▶ Hub Cover Kits	35
▶ Wheel Simulator Kits	37

▶ INTERIOR/CAB ACCESSORIES

▶ HINO GEAR



- ▶ **HinoStyle Center Caps** 34
- ▶ Hub Cover Kits 35
- ▶ Wheel Simulator Kits 37

HINOSTYLE CENTER CAPS

Hino worked with ATX to develop these stylish, unique wheel covers to dress up your truck! Available in three different finishes, with two different lug cover styles, these snap-on rings install quickly and easily to any wheel with 33mm/ 10x285.75 bolt patterns.

APPLICABLE MODELS

MY 2012-2020 Conventional, 2021+ L Series,
2020+ XL Series

POSITION	LUG STYLE	FINISH	PART NUMBER
Front	Flat Lug	Satin Black	HN001234240
		Chrome	HN001234241
		Gloss Black	HN001234242
	Spiked Lug	Satin Black	HN001234243
		Chrome	HN001234244
		Gloss Black	HN001234245
Rear	Flat Lug	Satin Black	HN001234246
		Chrome	HN001234247
		Gloss Black	HN001234248
	Spiked Lug	Satin Black	HN001234249
		Chrome	HN001234250
		Gloss Black	HN001234251



SATIN BLACK

GLOSS BLACK

LOCATE A DEALER AT [HINO.COM/DEALERS](https://hino.com/dealers) AND PLACE YOUR ORDER

FITS:



- ▶ HinoStyle Center Caps 34
- ▶ **Hub Cover Kits** 35
- ▶ Wheel Simulator Kits 37

HUB COVER KITS

Make your Hino Truck glisten from the ground up, starting with these stylish stainless steel hub covers, which are accentuated with the Hino "Flying H" logo. Fits 238 through 338 Hino models with Alcoa aluminum wheels sized 22.5" x 8.25", and 19.5" x 7.5". Does **not** fit 258LP.

APPLICABLE MODELS

MY 2005-2020 238/ 258 ALP/ 268/ 338,
2021+ L Series, 2020+XL Series Models

SPECIFICATIONS	PART #
Hub Cover Kit Front hub cover set - ABS chrome, 10-lug, 22mm stud, 285mm bolt circle Includes Hino logos	HN001234166
Hub Cover Kit Rear hub cover axle set - ABS chrome, 10 lug, 22mm stud, 285mm bolt circle Attachment includes 3 ridged jam nuts per wheel 2-3 threads of stud extension are required for rear hub cover	HN001234167
Replacement Hino "Flying H" Center Emblems	CLHN275

ADDITIONAL FITMENT INFORMATION:

Accuride 29685, 29602 wheels: 19.5x 7.5", 10-lug
 Accuride 415644, 416730 wheels: 22.5" x 8.25", 22.5" x 9.0"
 Alcoa 773621, 773622 wheels: 19.5" 7.5", 10-lug
 Alcoa 873601, 883671: 22.5" x 7.5", 22.5" x 8.25"



VIEW ON TRUCK ▶

LOCATE A DEALER AT [HINO.COM/DEALERS](https://www.hino.com/dealers) AND PLACE YOUR ORDER

FITS:



HUB COVER KITS

- ▶ HinoStyle Center Caps 34
- ▶ **Hub Cover Kits** 35
- ▶ Wheel Simulator Kits 37



[VIEW PART DETAILS ▶](#)

LOCATE A DEALER AT HINO.COM/DEALERS AND PLACE YOUR ORDER

FITS:



HINO
XL
SERIES



L
SERIES




CONVENTIONAL



M
SERIES




COE

- ▶ HinoStyle Center Caps 34
- ▶ Hub Cover Kits 35
- ▶ **Wheel Simulator Kits 37**

WHEEL SIMULATOR KITS

Make your Hino Truck glisten from the ground up with these mirror polished stainless steel wheel simulators. The high-grade stainless steel material provides the perfect blend of style and strength to complement your truck, and are accentuated with the Hino "Flying H" logo.

APPLICABLE MODELS

MY 2005-2020 238/ 258 ALP/ 268/ 338,
2021+ L Series, 2020+XL Series,
2012-2020 155/195 COE, 2021+ M Series Models

MODEL	SPECIFICATIONS	PART #
2011-2020 155 COE, 2021+ M4	16" & 17.5" 2-piece dia. by 6"w, dual-rear-wheel, 6 hand hole, 6 lug on 225.25mm bolt circle, 22mm front 30mm rear lug stud	42600H4080
	REPLACEMENT PART: Right Rear Inner Cap Nut (2x needed per installation)	MY-72618
	REPLACEMENT PART: Left Rear Inner Cap Nut (2x needed per installation)	MY-72620
2013-2020 COE 195, 2021+ M5	19.5" diameter x 6"-6.75w, dual-rear-wheel, 6 hand hole, 6 lug on 225.25mm bolt circle, 20mm front 30mm rear lug stud	42600H4010
Conventional, L Series, XL Series (check your vehicle's wheel size and bolt pattern)	16" dia. x 6"w, dual-rear-wheel, 6 hand hole, 6 lug on 225.25mm bolt circle, 22mm front 30mm rear lug stud	42600H4010
	19.5" dia. x 7.5"w, dual-rear-wheel, 5 hand hole, 10 lug on 285mm bolt circle, 22mm lug stud	42600H4095
	19.5" dia. x 6"w, dual-rear-wheel, 5 hand hole, 8 lug on 225mm bolt circle, M14x2 lug stud	42600H4015
	19.5" dia. x 6.75"w, dual-rear-wheel, 4 hand hole, 8 lug on 275mm bolt circle, 22mm lug stud	42600H4090
	22.5" dia. using expansion ring / universal ring mounts in outer lip.	42600H4100
All Models	Replacement Hino "Flying H" Center Emblem	CLHN275



INCLUDES ALL PARTS SHOWN



VIEW ON TRUCK ▶

LOCATE A DEALER AT [HINO.COM/DEALERS](https://hino.com/dealers) AND PLACE YOUR ORDER

FITS:



- ▶ HinoStyle Center Caps 34
- ▶ Hub Cover Kits 35
- ▶ **Wheel Simulator Kits 37**



5 HAND HOLE DESIGN



2 HAND HOLE DESIGN



INCLUDES ALL PARTS SHOWN



VIEW ON TRUCK ▶

WHEEL SIMULATOR KITS

These particular stainless steel simulators utilize a DOT-style mount for easy installation, feature removable center covers (with the Hino "Flying H" logo) for quick hub access, and are available in either 2- or 5-hand hole designs.

Fits 22.5" x 7.5" & 8.25" wide wheels, 10 Lug on 285mm bolt circle .

MODEL	SPECIFICATIONS	PART #
268/338/358, L Series, XL Series	22.5" dia. x 7.5-8.25"w, 5 hand hole design 10-lug, 285mm bolt circle Set of four covers (2 front, 2 rear) and hardware	HN001234207
	22.5" dia. x 7.5-8.25"w; 5 hand hole design 10-lug, 285mm bolt circle Set of two front covers and hardware	HN001234208
	22.5" dia. x 7.5-8.5"w; 5 hand hole design 10-lug, 285mm bolt circle Set of two rear covers and hardware	HN001234209
	22.5" dia. x 7.5-8.25"w, 2 hand hole design 10-lug, 285mm bolt circle Set of four covers (2 front, 2 rear) and hardware	HN001234214
	22.5" dia. x 7.5-8.5"w; 2 hand hole design 10-lug, 285mm bolt circle Set of two front covers and hardware	HN001234215
	22.5" dia. x 7.5-8.5"w; 5 hand hole design 10-lug, 285mm bolt circle Set of two rear covers and hardware	HN001234216
	REPLACEMENT PART: Hino "Flying H" Center Emblem	CLHN275

ADDITIONAL FITMENT INFORMATION:

XL Series Trucks are 22.5" x 9.0". These simulators will fit.

For XL Series 6x4 Models, purchase **both** HN001234207 and HN001234209 , or HN001234214 and HN001234216 in order to cover all six outside wheels.

LOCATE A DEALER AT HINO.COM/DEALERS AND PLACE YOUR ORDER

FITS:



- ▶ HinoStyle Center Caps 34
- ▶ Hub Cover Kits 35
- ▶ **Wheel Simulator Kits 37**

WHEEL SIMULATOR KITS



[VIEW PART DETAILS ▶](#)

LOCATE A DEALER AT HINO.COM/DEALERS AND PLACE YOUR ORDER

FITS:





INTERIOR ACCESSORIES ▶

▶ EXTERIOR ACCESSORIES

▶ WHEEL ACCESSORIES

▶ INTERIOR ACCESSORIES

▶ Floor Mats 42

▶ Seats 43

▶ Seat Belts 46

▶ Seat Covers 47

▶ Tactical Seat Covers 48

▶ Radio/ Audio Systems 49

▶ HINO GEAR



► Floor Mats	42
► Seats	43
► Seat Belts	46
► Seat Covers	47
► Tactical Seat Covers	48
► Radio/ Audio Systems	49

FLOOR MATS

These black, durable floor mats not only lend your cabin a distinctive look, thanks to the Hino "flying H" emblem, but help trap dirt and debris, and can easily be shaken out or cleaned with soapy water.

Ordered as a pair, and super simple to install.

APPLICABLE MODELS

MY 2005-2020 Conventional, 2021+ L Series,
2020+ XL Series,
2005-2020 155/195 COE, 2021+ M Series Models

CONVENTIONAL



COE



MODEL

Floor Mats -
All 2005-2020 Conventional, 2021+ L Series,
2020+ XL Series Models

Floor Mats -
All 2012-2020 155/195 COE Models,
2021+ M Series models

PART

FLRMATNAPS

FLRMATCOE

FITS:



► Floor Mats	42
► Seats	43
► Seat Belts	46
► Seat Covers	47
► Tactical Seat Covers	48
► Radio/ Audio Systems	49

SEATS CONVENTIONAL

Freshen up your truck's interior with new seating - and consider improving comfort by adding air ride seats while you're at it. Air ride seats accommodate drivers up to 350 lbs. Passenger-side seating incorporates a bracket for washer fluid bottle.

On-board air source is required for any air-ride seat.

APPLICABLE MODELS

MY 2005-2020 Conventional Models

MODEL	SPECIFICATIONS	PART #
Standard National Seats 2011-2020 238 / 258 / 268 / 338	Driver Air Suspension, Single Static, Charcoal Cloth	71200E0B31
	Driver Air Suspension, Single Static, Charcoal, Vinyl	71200E0B40
	Passenger Bench, Charcoal Vinyl	71100E0C50
	Passenger Bench, Charcoal Cloth	71100E0C41
	Passenger Single/ Bucket, Reclining, Charcoal Vinyl	71100E0B80
	Passenger Single/ Bucket, Reclining, Charcoal Fabric	71100E0B71
National Seating Passenger Air Ride 2011-2020 238 / 258 / 268 / 338	Passenger Single/ Bucket, Air ride, Charcoal Vinyl	HN001234202
	Passenger Single/ Bucket, Air ride, Charcoal Cloth	HN001234201
	Adapter plate for above seats	HN001234203



VIEW COE SEATS ►

LOCATE A DEALER AT [HINO.COM/DEALERS](https://www.hino.com/dealers) AND PLACE YOUR ORDER

FITS:



► Floor Mats	42
► Seats	43
► Seat Belts	46
► Seat Covers	47
► Tactical Seat Covers	48
► Radio/ Audio Systems	49



SEARS ATLAS SEAT - CLOTH



SEARS ATLAS SEAT - VINYL



VIEW COE SEATS ►

SEATS CONVENTIONAL

For the ultimate in ride comfort, consider upgrading your Hino conventional to a Sears air ride seat. Available in hard-wearing vinyl or durable cloth fabrics in a variety of colors, Sears seating provides a contoured back frame structure and ergonomic bolstering.

On-board air source required for installation.

APPLICABLE MODELS

MY 2005-2020 Conventional Models

MODEL	MATERIAL	SPECIFICATIONS	PART #
Optional Sears Seats, 2005-2020 238/ 258/ 268/ 338	Black Vinyl	Driver's Seat, w/ armrest on RH side	HN001234174
		Passenger Seat, w/ armrest on LH side	HN001234176
		Driver's Seat, w/ armrest on RH side, w/ compressor	HN001234179
	Black Cloth	Driver's Seat, w/ armrest on RH side	HN001234173
		Passenger Seat, w/ armrest on LH side	HN001234180
		Driver's Seat, w/ armrest on RH side, w/ compressor	HN001234178
	Blue Vinyl	Driver's Seat, w/ armrest on RH side	HN001234175
		Passenger Seat, w/ armrest on LH side	HN001234177

FITS:



► Floor Mats	42
► Seats	43
► Seat Belts	46
► Seat Covers	47
► Tactical Seat Covers	48
► Radio/ Audio Systems	49

COE BOSTROM SEAT



VIEW CONVENTIONAL SEATS ►

SEATS COE

These Bostrom seats are designed to give the Hino COE driver a premium driving position. These seats feature LTSS non-isolating magnetic suspension bases for a smooth ride, while adjustable air lumbar is available for additional adjustability. Trimmed in gray cloth.

APPLICABLE MODELS

MY 2012-2020 155/195 COE,
2021+ M Series Models

SPECIFICATIONS	PART #
Driver's Side - Hi-Back LTSS Seat, gray cloth	HN001234108

FITS:



► Floor Mats	42
► Seats	43
► Seat Belts	46
► Seat Covers	47
► Tactical Seat Covers	48
► Radio/ Audio Systems	49

SEAT BELTS - ORANGE

These bright orange belts make seatbelt usage clearly visible from outside the truck. These kits include the 3-point shoulder belt and retractor assembly, along with the tether-style floor-mounted buckle/ strap assembly. Available for front seats only.

APPLICABLE MODELS

2005-2020 Conventional, 2021+ L Series,
2020+ XL Series, 2012-2020 155/195 COE,
2021+ M Series Models

MODEL	SPECIFICATIONS	PART #
2005-2020 Conventional, 2020 XL Series	Front Seat, Driver Side	73120E0180
	Front Seat, Passenger Side	73110E0160
2021+ L Series and XL Series	Front Seat, Driver Side	73120E0240
	Front Seat, Passenger Side	73110E0200
2012-2020 155/195 COE, 2021+ M Series	Front Seat, Driver Side	7321037390
	Front Seat, Passenger Side	7321037450



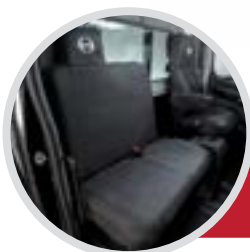
FITS:



► Floor Mats	42
► Seats	43
► Seat Belts	46
► Seat Covers	47
► Tactical Seat Covers	48
► Radio/ Audio Systems	49



NATIONAL SEAT



VIEW TACTICAL SEAT COVERS ►

SEAT COVERS CONVENTIONAL

Keep your Hino's seats protected while giving your truck's interior a professional new look! These seat covers strike the right balance of comfort and durability for daily use.

APPLICABLE MODELS

MY 2005-2020 Conventional Models

MODEL YEAR/ SEAT TYPE	SPECIFICATIONS	PART #
2005-2013 Conventionals w/ Sears Seats	Driver with Logo - Gray	HN001234182
	Passenger with Logo - Gray	HN001234181
	Bench without logo - Gray	HN001234183
2012-2020 Conventionals w/ National Seats	Kit 1 Driver Side Upper & Lower & Right Arm Rest	HN001234087
	Kit 2 Passenger Side Upper & Lower & Left Arm Rest	HN001234088
	Top & Bottom Seat Covers Driver or Passenger Bucket	HN001234084
	Driver Right Arm Rest Cover	HN001234082
	Passenger Left Arm Rest Cover	HN001234081
	Upper Cover Only	HN001234079
	Lower Cover Only	HN001234080
2005-2020 Conventionals All w/ Front Passenger Bench Seat	Kit - Includes Bench Back and Bench Cushion Covers	HN001234089
	Seat Cover, Bench, Back, Black	HN001234075
	Seat Cover, Bench, Cushion, Black	HN001234076

FITS:



▶ Floor Mats	42
▶ Seats	43
▶ Seat Belts	46
▶ Seat Covers	47
▶ Tactical Seat Covers	48
▶ Radio/ Audio Systems	49

TACTICAL SEAT COVERS

Protect your seats, spruce up your interior, and store your odds and ends with one product - Hino's tactical seat covers! These durable covers are made with ballistic-style material, wear the Hino "flying H" logo, and include military-style loop backing to secure your belongings.

APPLICABLE MODELS

MY 2012-2020 Conventional, 2012-2020 155/195 COE, 2021+ M Series Models

MODEL	SPECIFICATIONS	PART #
2012-2020 Conventional	Single Cab Seat Cover Kit Includes covers for: • Driver's National seat w/ arm rest • Passenger bench seat	HN001234095
	Single Cab Seat Cover Includes covers for: • Driver's seat w/ arm rest • Passenger split bench	HN001234093
2012-2020 155/195 COE, 2021+ M Series	Double Cab - Rear Bench Cover Only (Order both COE kits to fully equip one double cab truck)	HN001234094



CONVENTIONAL



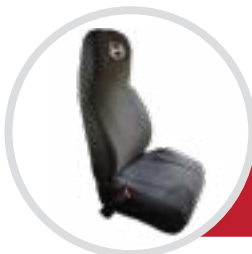
COE DUAL CAB REAR SEAT COVER



COE SINGLE CAB SEAT COVER



COE SINGLE PASSENGER BENCH



TACTICAL BACKING

[VIEW SEAT COVERS ▶](#)

LOCATE A DEALER AT [HINO.COM/DEALERS](https://www.hino.com/dealers) AND PLACE YOUR ORDER

FITS:



▶ Floor Mats	42
▶ Seats	43
▶ Seat Belts	46
▶ Seat Covers	47
▶ Tactical Seat Covers	48
▶ Radio/ Audio Systems	49

RADIO/ AUDIO SYSTEMS

These AM/FM/ CD/ USB stereo receivers are designed to be a perfect fit in your Hino Truck's dashboard, and connect directly to the truck's 10-pin wiring harness. Plays audio CDs and discs containing MP3 and WMA files. Available with and without Bluetooth phone connectivity for hands-free calls and audio streaming.

APPLICABLE MODELS

All MY14+ Hino Trucks

MODEL	SPECIFICATIONS	PART #
2014-2020 Conventional, 2014-2020 155/195 COE, 2021+ M Series, 2021+ L Series, 2020+ XL Series	AM/FM/CD Stereo Receiver w/ USB & 3.5mm AUX Inputs; with Bluetooth	86120E0170
	AM/FM/CD Stereo Receiver w/ USB & 3.5mm AUX inputs; without Bluetooth	86120E0160



AVAILABLE BLUETOOTH
PHONE CONNECTIVITY &
AUDIO STREAMING
(P/N 86120E0170 ONLY)



STANDARD
FRONT-PANEL USB AND
3.5MM AUXILIARY INPUTS

FITS:



HINO GEAR

 GIFTS, GEAR, ETC.

NEW! SHOW OFF YOUR HINO PRIDE



ITEM DESCRIPTION

17" x 17" round HinoStyle Sign

PART

HINOSTYLESIGN

FITS:



HINO
XL
SERIES



L
SERIES




CONVENTIONAL



M
SERIES




COE





LOCATE A DEALER AT [HINO.COM/DEALERS](https://hino.com/dealers) AND PLACE YOUR ORDER